

Music Theory

Music Staff
Infections: Let's
Read some
Music!!

Question: How do we combine the pitches we hear with the rhythms we make?

Answer: We start reading music.

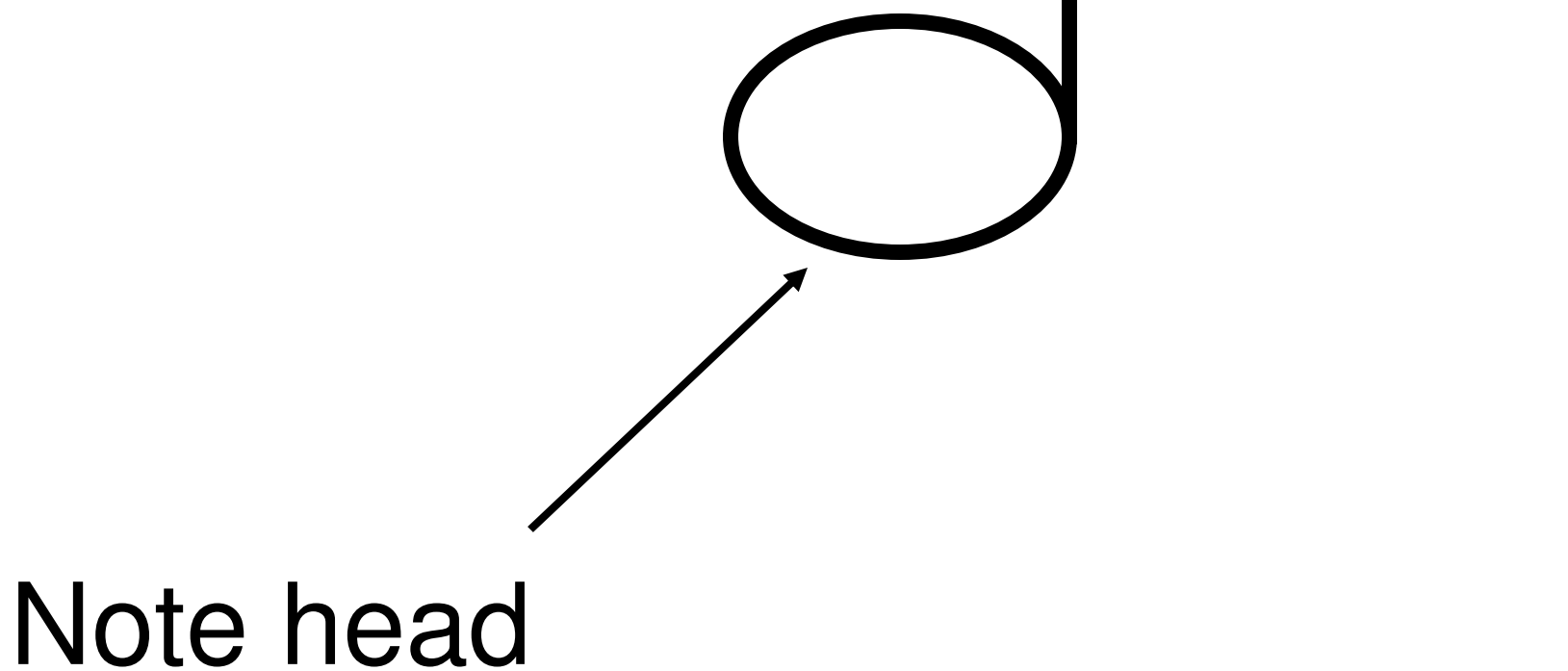
How Do I read music?

- Learn to use the musical staff
- Understand how the lines and spaces work
- Learn where the letters are placed.

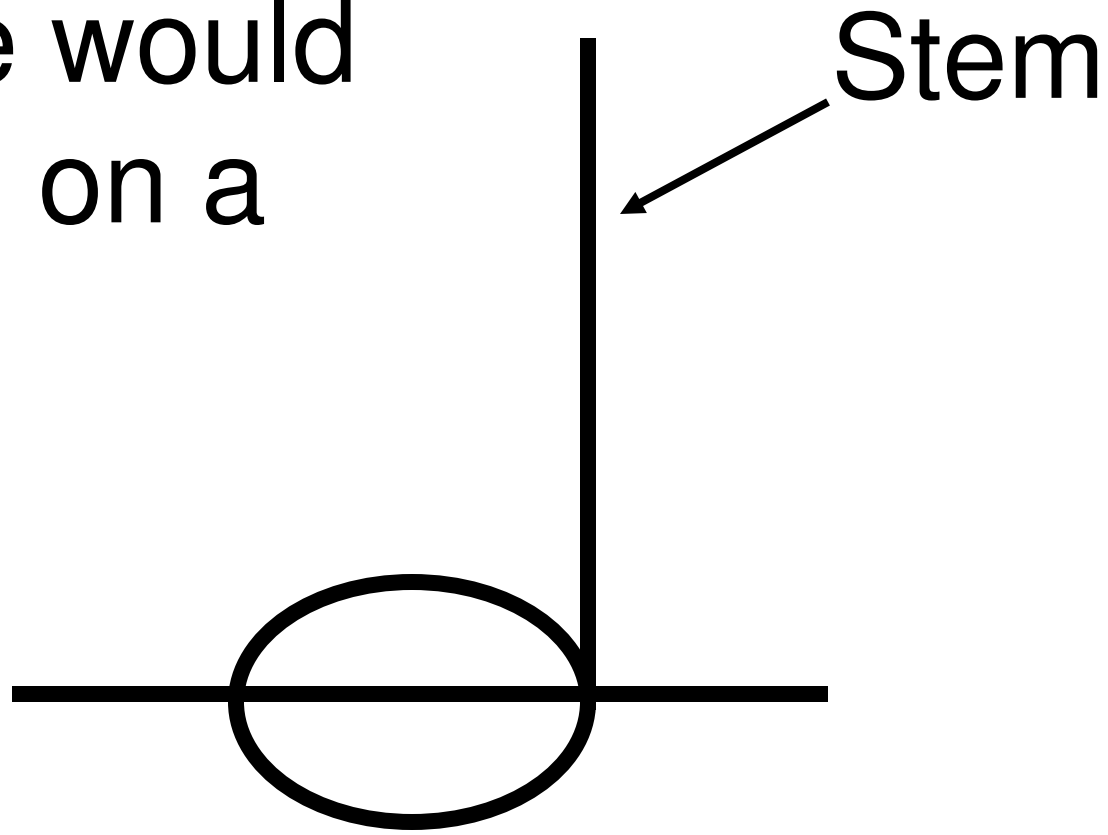
How do we know when a note is on a line or a space?

- Check the center of the note head.
- If a line is going through the center of the note head, the note is on that line.
- Any line on top or on bottom of a note, and the note is on a space.

For a note to be on a line the line must go through the note head.



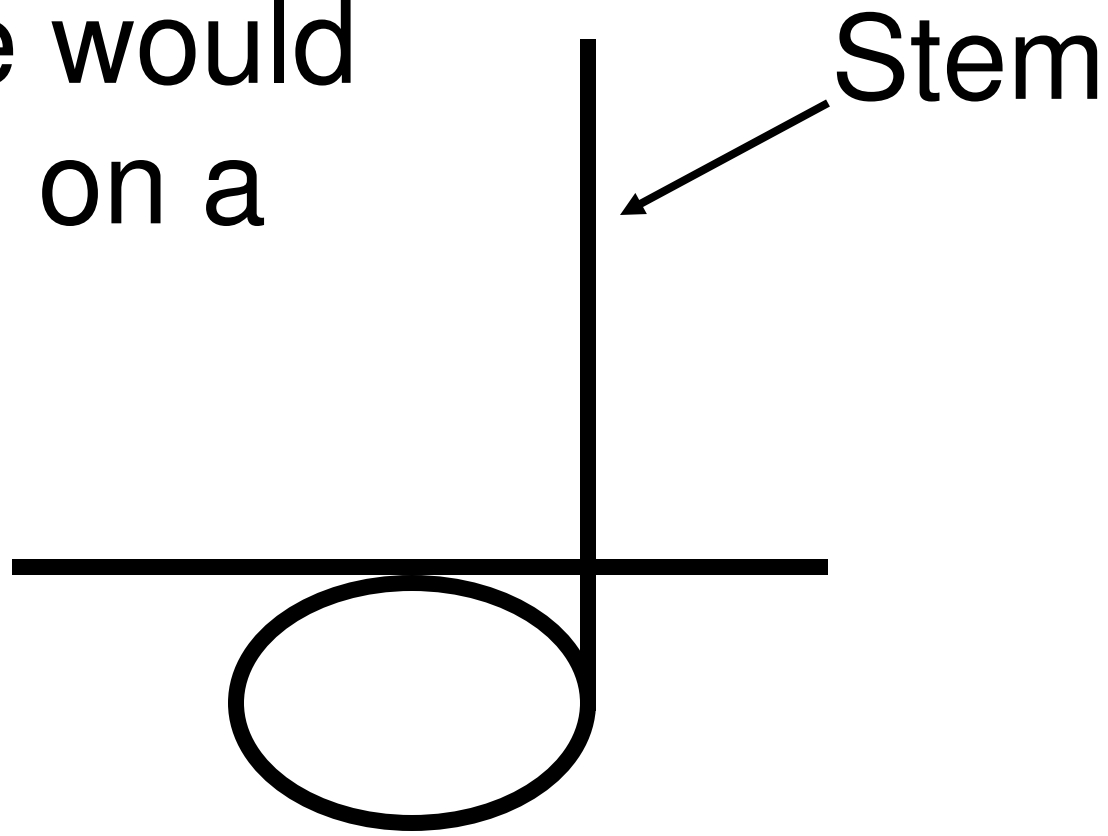
This note would
be called on a
line.



Stem

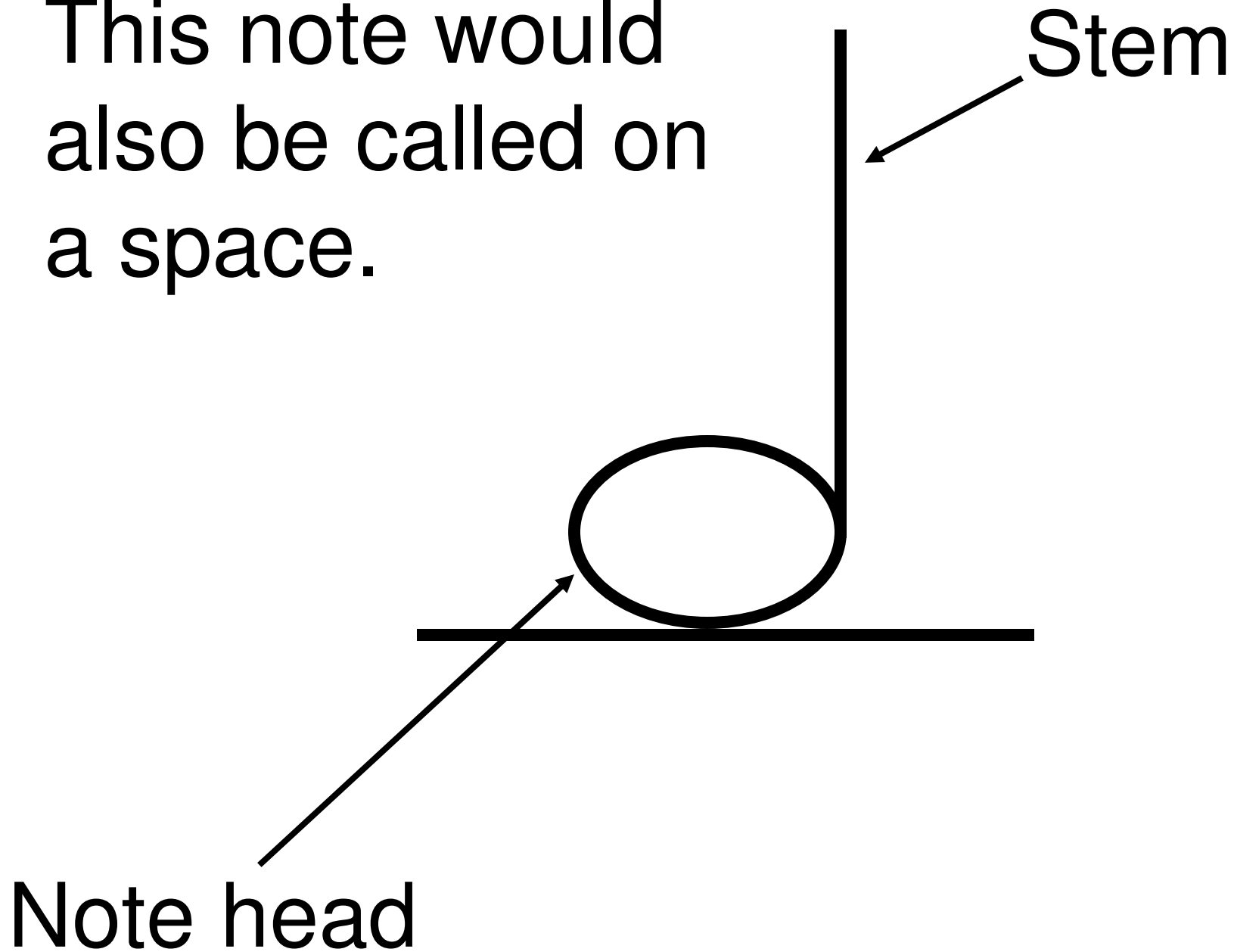
Note head

This note would
be called on a
space.



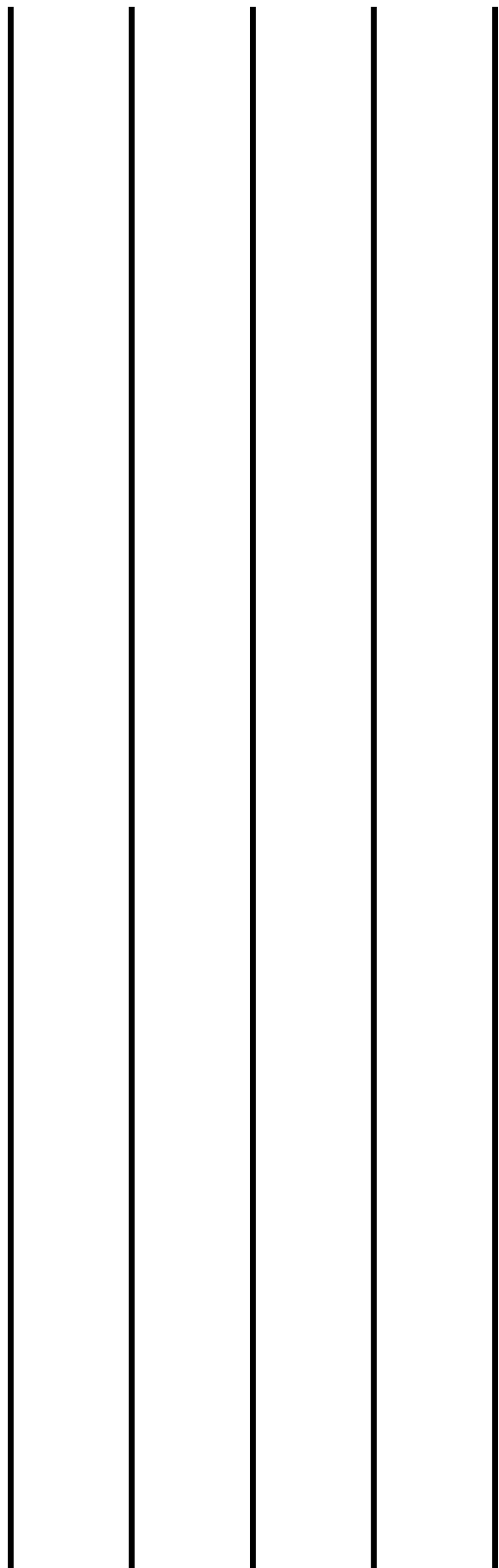
Note head

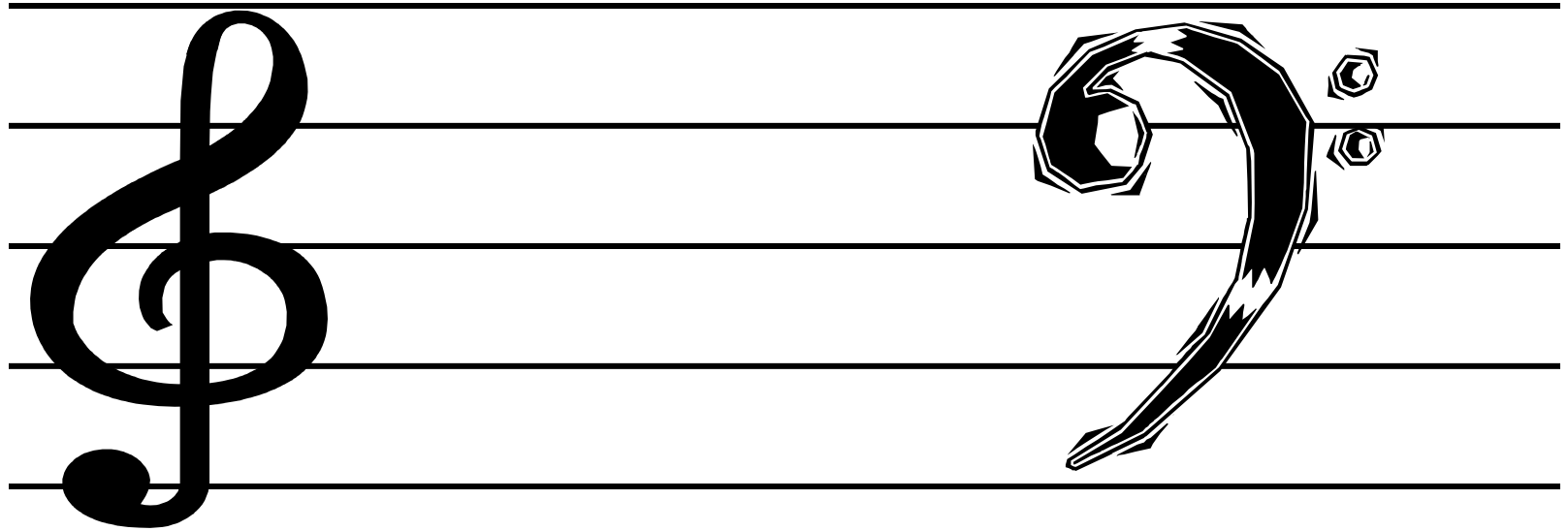
This note would also be called on a space.



The Musical Staff

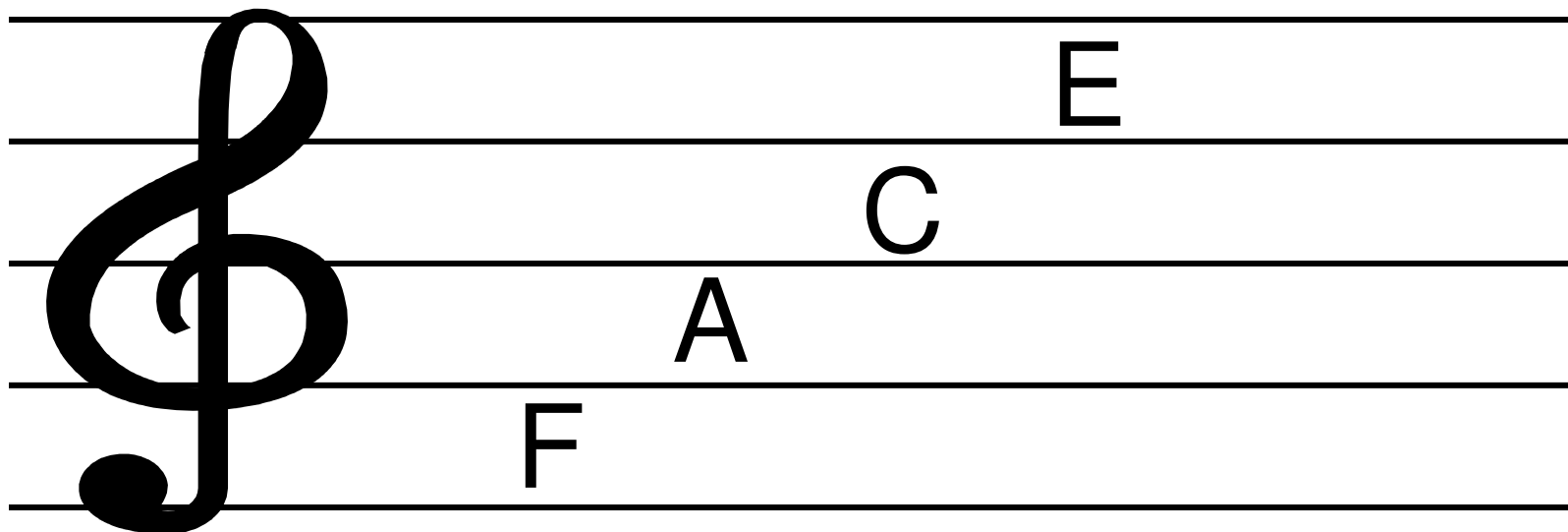
- Five lines and the spaces in between
- The clef determines where the letters go.

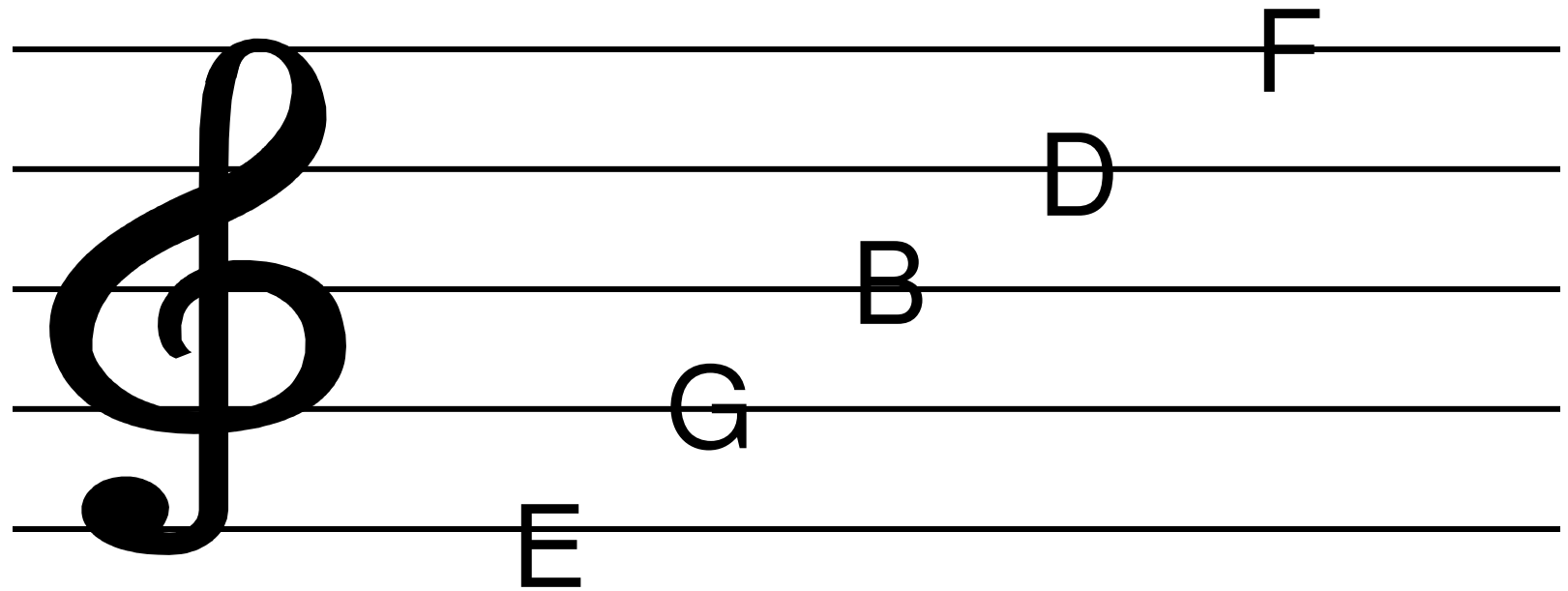




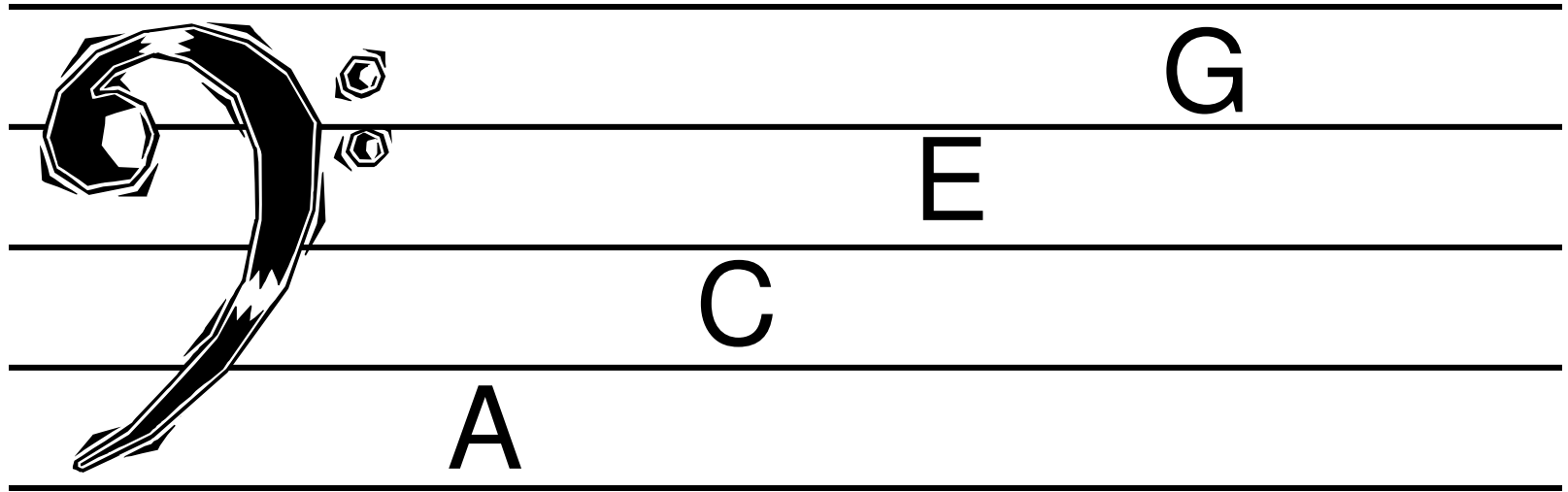
Treble Clef

Bass Clef

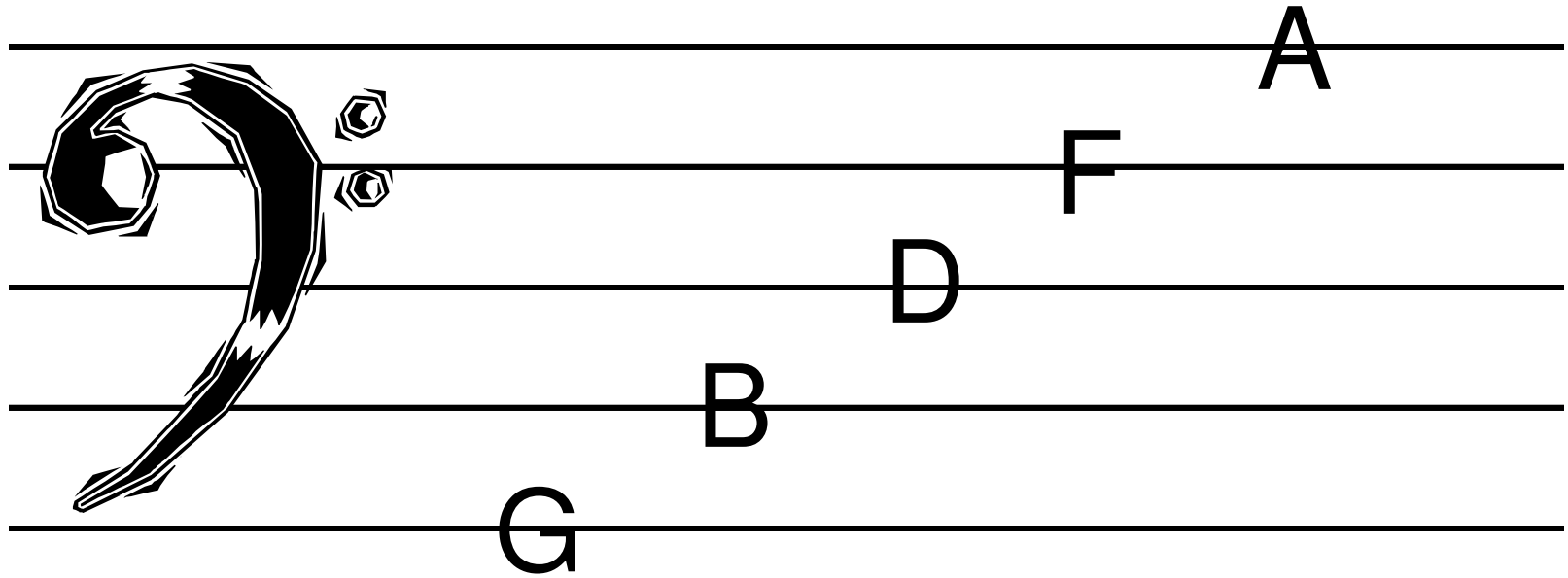




Every Good Boy Does Fine



All Cows Eat Grass



Good Boys Do Fine Always

